



Bunbartha, Kaarimba Zeerust Local Area Plan

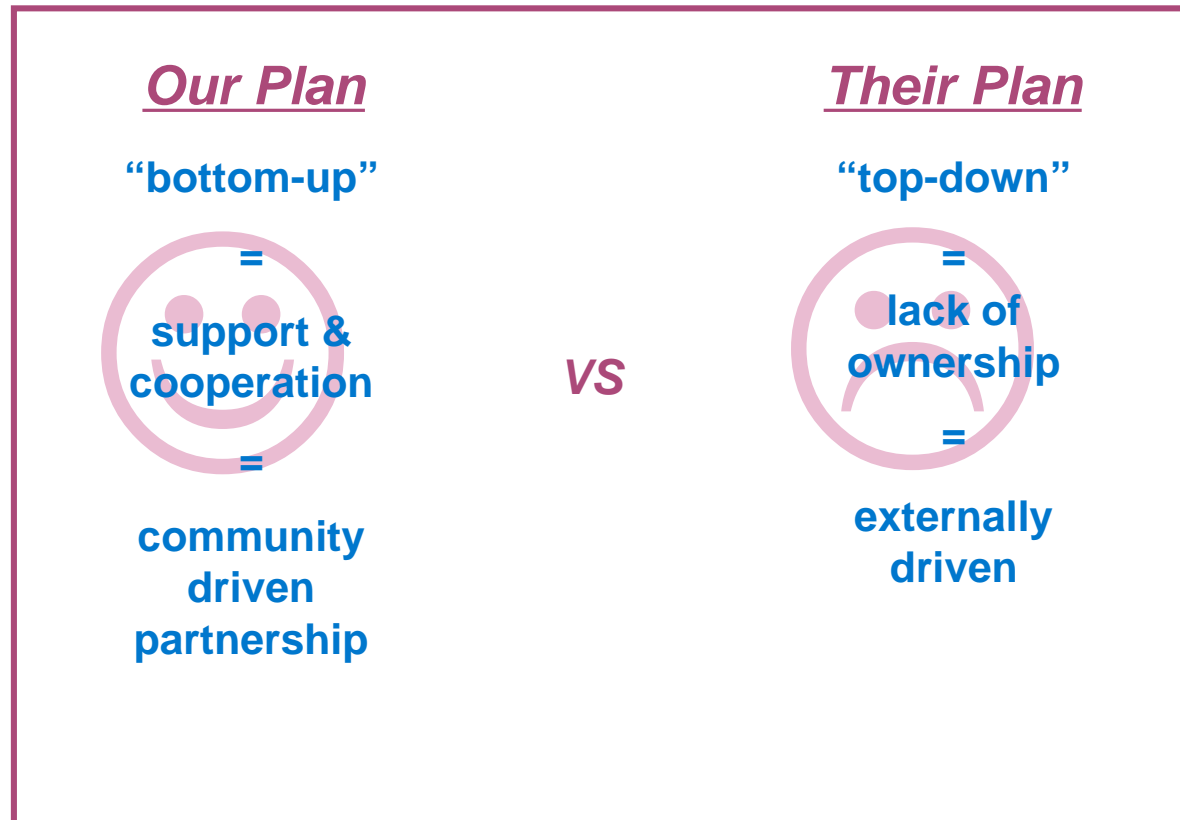
What is a Local Area Plan?



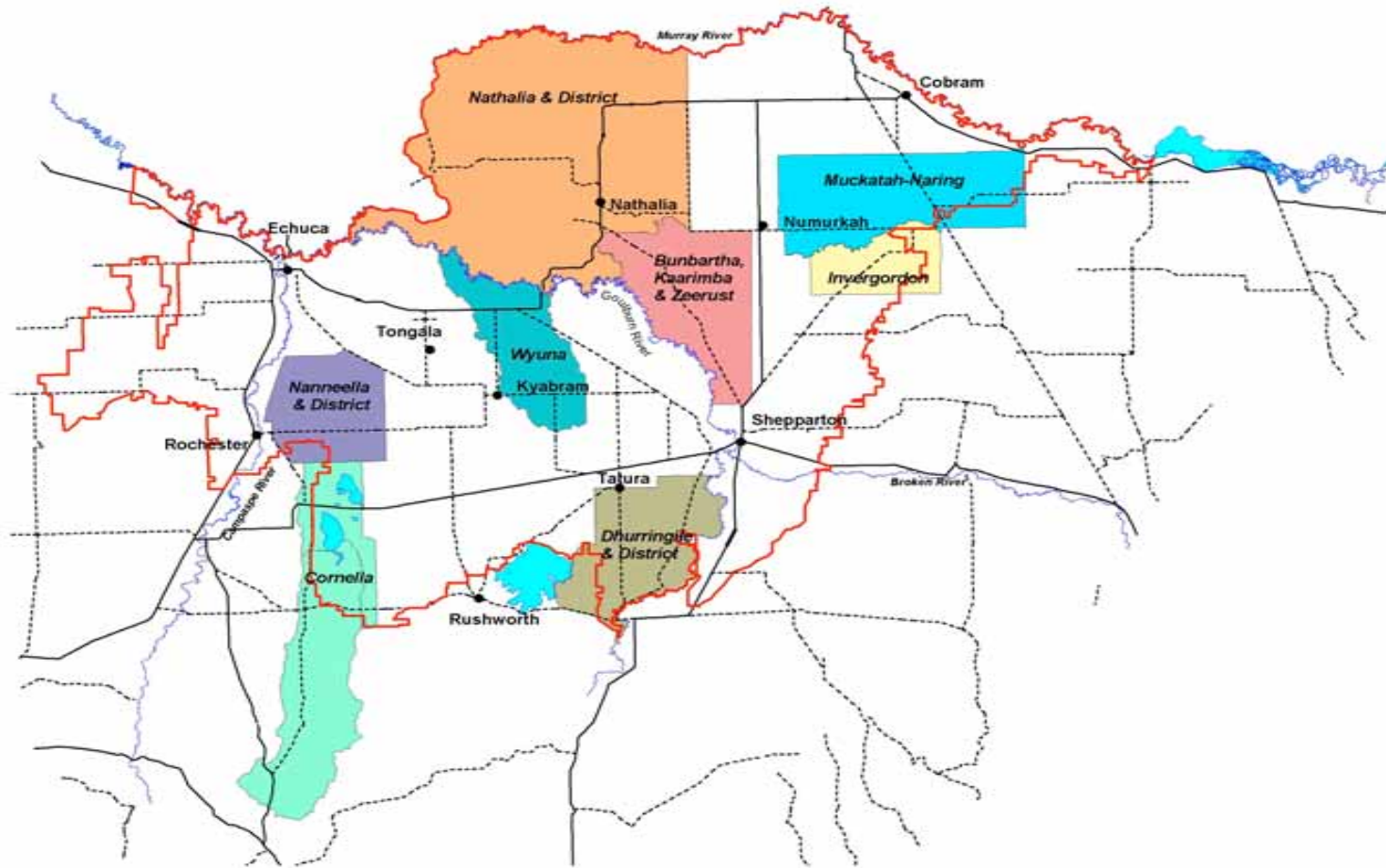
A plan to identify and overcome land, water, social and economic issues in local communities



Aims of Local Area Planning

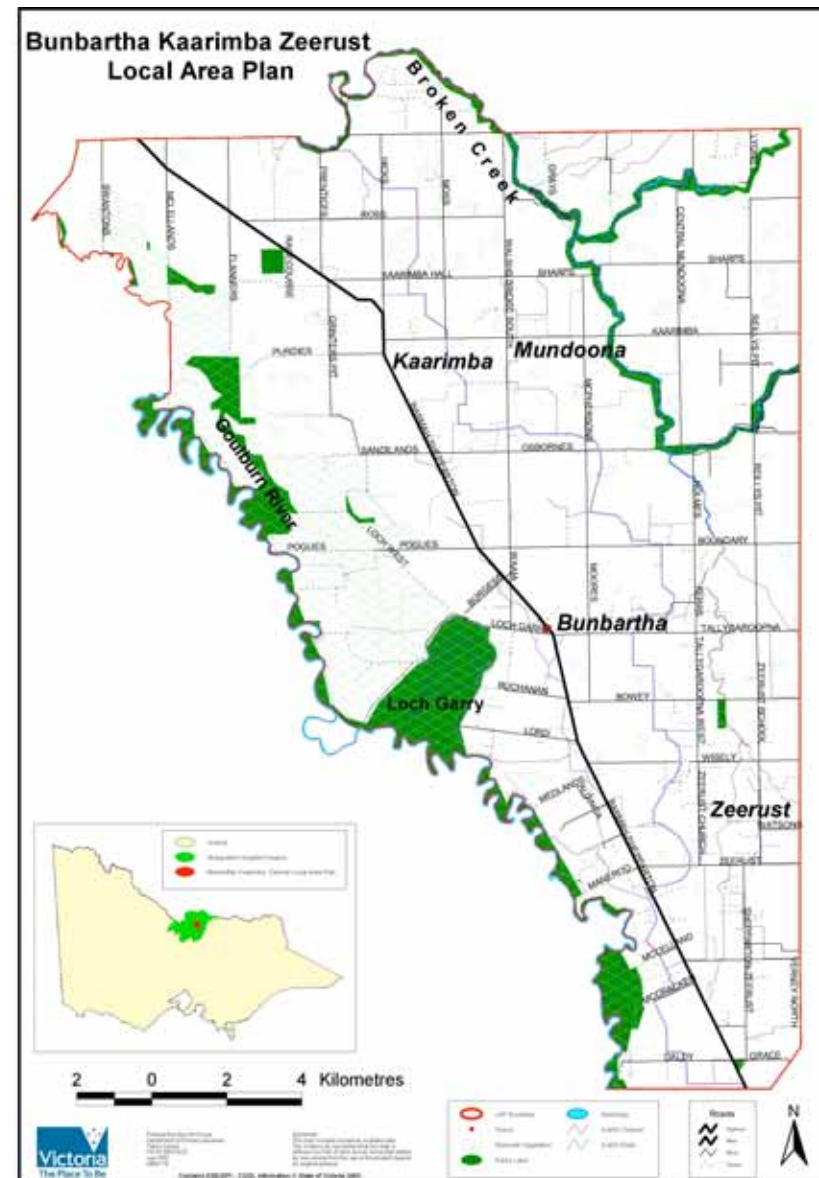


Local Area Plans in the SIR



Bunbartha, Kaarimba, Zeersut Area

- 32,306 ha
- Approx 300 households
- 2 Local Governments
- Diverse Agricultural Area
- Rural Commuters



Local Area Plan Development

- Promotion and Community Meeting
- Identify issues, community support?
- Community Planning Group and Links Co-ordinator
- Regular meetings to discuss actions
- Agency Feedback
- Community Feedback
- Launch



Local Area Plan Implementation

- Group Development - How will we operate?
- Priority Setting - re-visit regularly
- Feedback of Priorities
- Identify partnerships - who needs to be involved?
- Complete Actions
- 6 monthly review of progress with group
- Community Co-ordinator



Benefits of a Local Area Planning Approach

- Activities are community drive, accelerate onground works
- Partnerships strengthened through working together
- Opportunities for community groups to work together and share the load
- Clear link between group activities and Regional Catchment Strategy
- Communicate and support successes
- Empowered Communities



BKZ LAP



- Natural Assets on public land
- Agricultural Sustainability
- Natural Environment
- Waste Management/ Pollution
- Pest Plants and Animals
- Local Community
- Infrastructure
- Cultural Heritage

Group Achievements

- Establishing Group processes and partnerships
- Telstra Tower
- Weed Wackers Program
- Direct Seeding field day
- Community Newsletter
- Kaarimba Showcase
- Moira Shire Community Plan



Keys to success...

- ✓ Each LAP is a roadmap where the journey is as important as the end point. By addressing the triple bottom line the Plan becomes a more holistic tool.
- ✓ Local Area Planning builds community skills in areas of leadership, strategic planning, technical knowledge, team building and communication
- ✓ Successful implementation of Local Area Plans needs a strong partnership between the community & Government agencies

For more information visit:
www.gbcma.vic.gov.au/lap

The LAP project is funded through the Natural Heritage Trust and is supported through a partnership approach between:

- Department of Primary Industries
- Department of Sustainability and Environment
- Goulburn Murray Landcare Network
- Goulburn Broken Catchment Management Authority

